

MAX VEHICLE ROOF LOAD RATING: 100 KG

TOTAL LOAD EQUALS WEIGHT OF ROOF RACKS + ACCESSORIES + CARGO

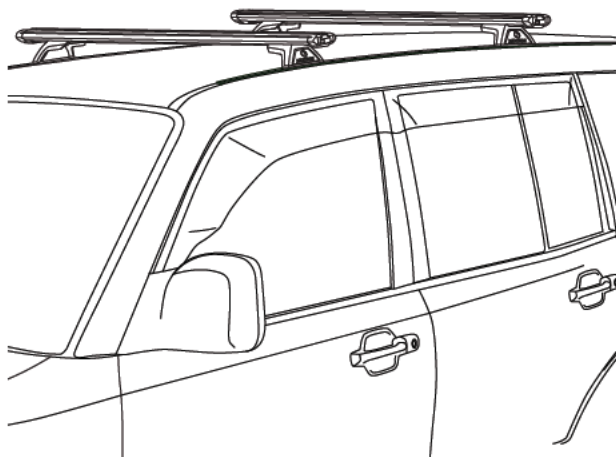
FIRST TIME INSTALLATION

- Please read instructions carefully before installation.
- Check the contents of kit. Contact your YAKIMA dealer if any parts appear missing or damaged.
- Clean your roof thoroughly prior to fitting the LockNLoad Track Heavy Duty Roof Rack System.
- Place these instructions in the vehicle's glove box after installation is complete.



TOOLS REQUIRED:

- Marking Pen
- Tape Measure
- Masking Tape
- Drill Bit Stop
- Hammer
- Rivet Gun
- Centre Punch
- Vacuum Cleaner
- Automotive Degreaser
- Automotive Adhesive
- Zinc Rich Cold Galvanising Coating
- Power or Cordless Drill
- Flat Blade Screwdriver
- Mastic Silicone Sealant
- Fine Tooth Hacksaw
- 13 mm Socket or Spanner
- 10 mm Open Ended Spanner
- Rubber Mallet (Optional)
- #2 Phillips Head Screwdriver

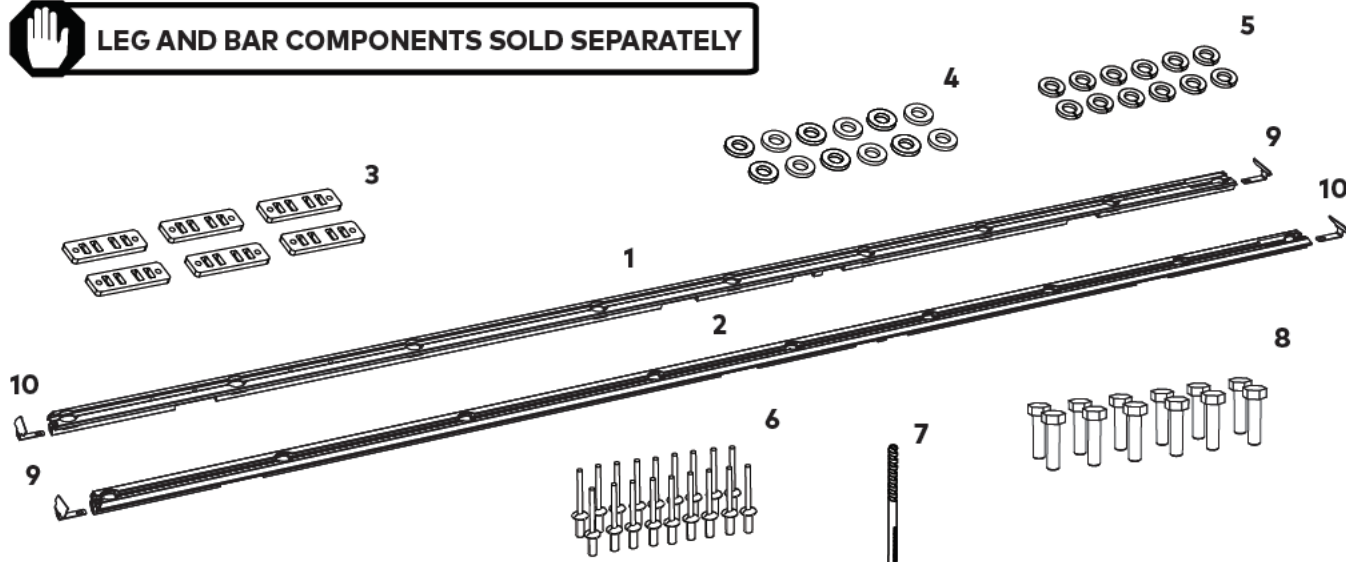


KIT CONTENTS

ITEM	COMPONENT	QTY	ITEM	COMPONENT	QTY
1.	Track Mits. Pajero NM-NP Right Hand Side	x1	6.	Rivet	x18
2.	Track Mits. Pajero NM-NP Left Hand Side	x1	7.	4.9 mm Drill Bit	x1
3.	Track Nut Plate	x6	8.	M6 Hex Screw	x12
4.	M6 Washer	x12	9.	End Cap Front Left & Rear Right	x2
5.	M6 Spring Washer	x12	10.	End Cap Front Right & Rear Left	x2



LEG AND BAR COMPONENTS SOLD SEPARATELY



TRACK INSTALLATION

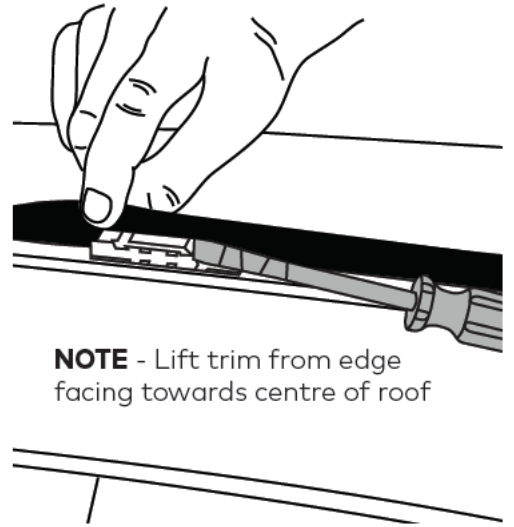
1 BEFORE BEGINNING INSTALLATION

Clean roof thoroughly and allow to dry before beginning installation.

REMOVE ROOF CHANNEL TRIM

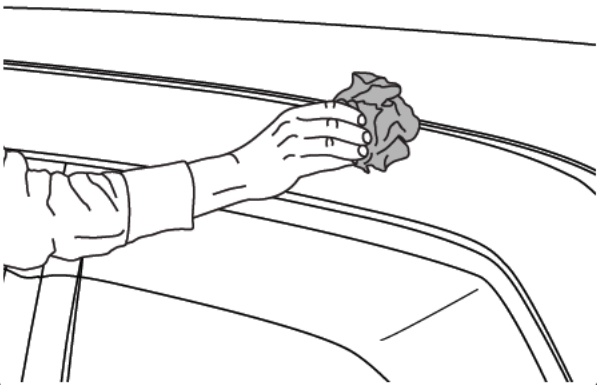
Carefully lift rubber roof channel trim with fingers to expose the white plastic clips in the channel. Using a Screwdriver (wrap tape around end of Screwdriver to prevent paint scratching), gently slide clips sideways to unhook them from the roof channel trim.

Store roof trim in a safe location for use in Step 14.



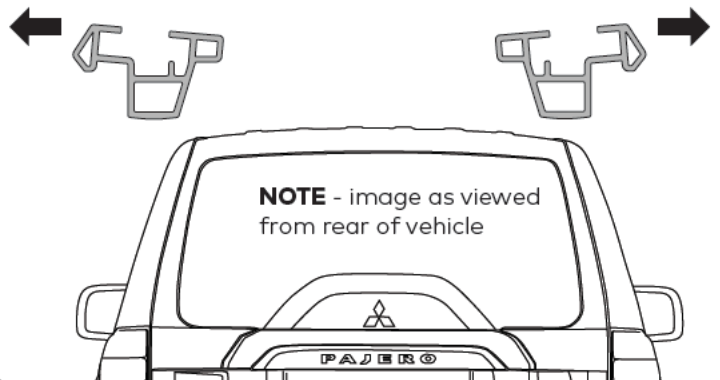
2 CLEAN ROOF CHANNEL

Once trim is removed thoroughly clean out roof channel.



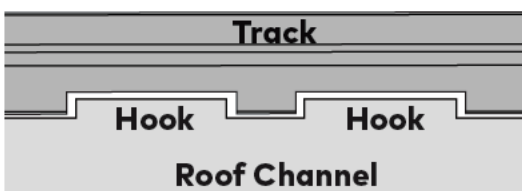
3 TRACK ORIENTATION

The larger side Track extrusion must be facing towards the **outside of vehicle** roof as shown, with rectangular cut outs at rear of vehicle.



4 ALIGN TRACK IN ROOF CHANNEL

Place Track into roof channel, aligning as shown by locating track over the hooks in roof channel.



5 MARK TRACK HOLES

With the help of an assistant, hold Track down firmly in roof channel and mark all holes using a Marking Pen. Remove Track.



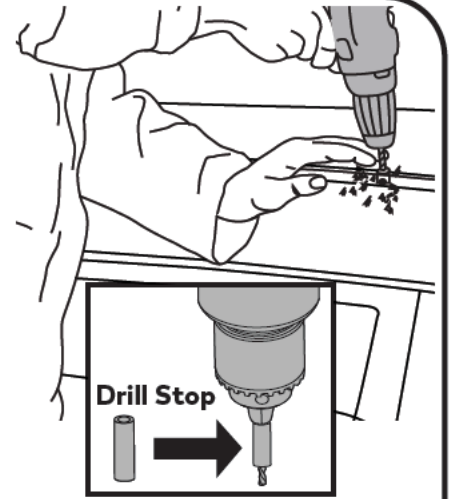
6 CENTRE PUNCH HOLES

Using a Centre Punch and Hammer, accurately Centre Punch the holes marked in the previous Step.



7 DRILL ROOF CHANNEL

Marked out holes can now be carefully drilled through using the supplied Drill Bit and a Drill Stop (not supplied). A Drill Stop will alleviate the need to remove hood lining and also minimise risk of damage to air conditioning pipes.



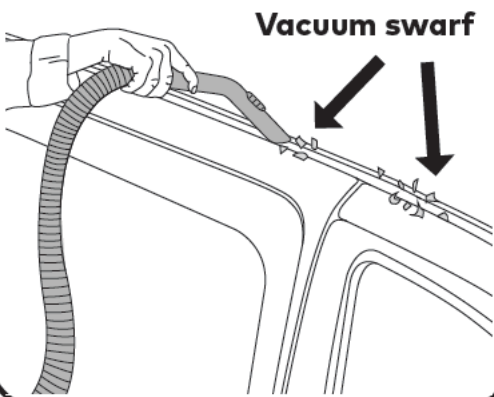
Warning!

Pay extra attention when breaking through as air conditioning pipes run along the inside of roof. A Drill Stop is recommended.

Set the Drill Stop to ensure you don't drill through roof lining (there are 3 roof skins).

8 REMOVE SWARF

Avoid pushing swarf into the newly drilled holes by removing swarf from roof channel with a Vacuum Cleaner.



9 APPLY PROTECTIVE SEALANTS

Stage 1

Liberal apply a Zinc Rich Cold Galvanising Solution to the inside surface and surrounds of each drilled hole. Allow solution to become touch dry before proceeding with Stage 2 (approx. 10 min depending on product used).

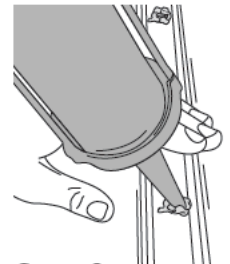
Stage 2

Liberal apply a Mastic Silicone Sealant to the inside surface and surrounds of each hole.



Stage 1

Apply liberally in and around holes

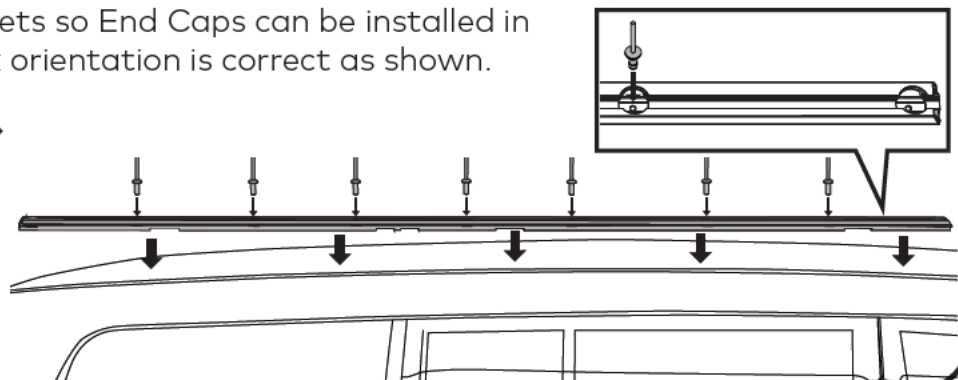
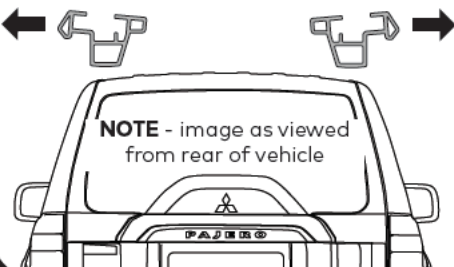


Stage 2

Apply liberally in and around holes

10 PLACE TRACKS BACK INTO ROOF CHANNEL

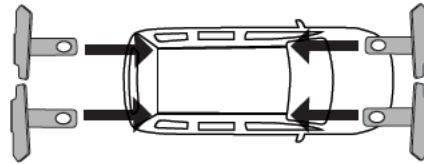
Accurately place Tracks over drilled holes in roof channel, using the Rivets to position. Leave out the end Rivets so End Caps can be installed in Step 12. Ensure Track orientation is correct as shown.



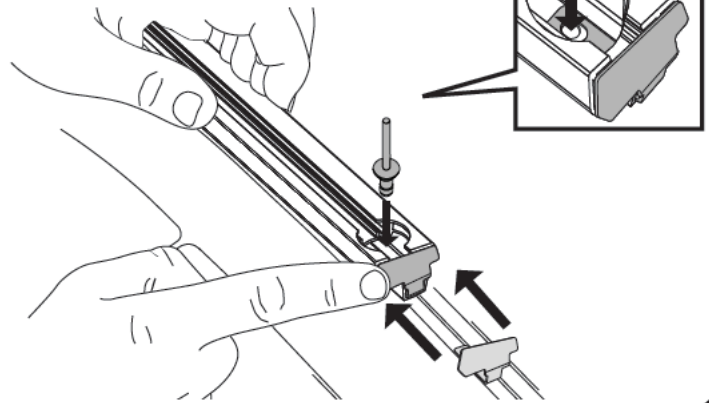
11**END CAP FITMENT**

Assemble End Caps within Tracks as shown, taking note of End Cap orientation.

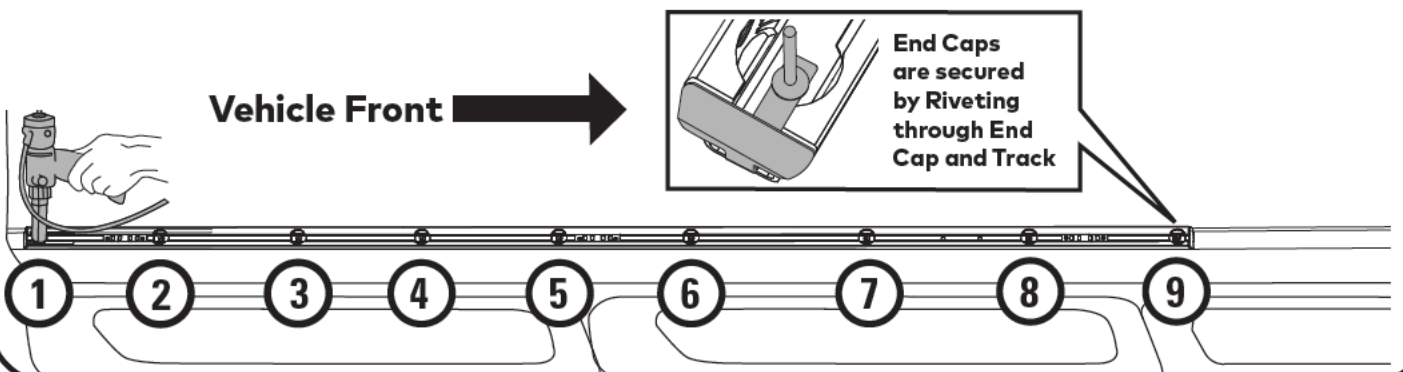
Ensure that the End Cap hole lines up with the hole on Track end before inserting Rivet.



Align End Cap and slide into position

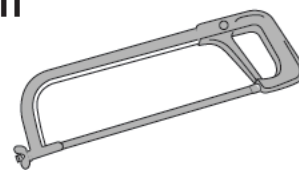
**12****TRACK INSTALLATION**

Using a Rivet Gun, punch each Rivet starting from the rear of the vehicle working consecutively forwards, as shown.

**13****CUT ROOF CHANNEL TRIM TO SIZE AND REFIT**

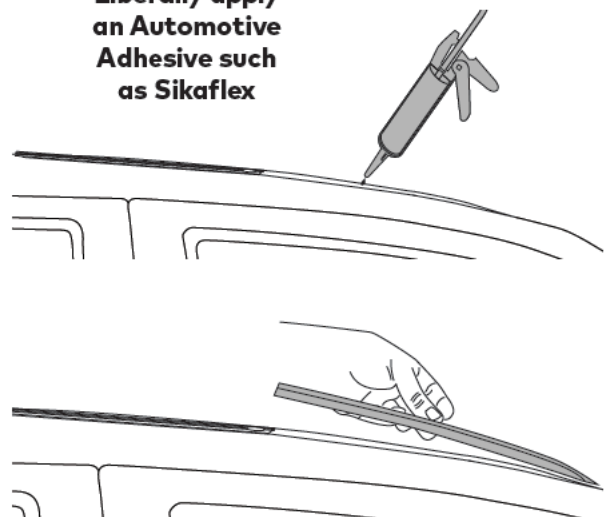
Thoroughly clean exposed roof channel at front of Tracks using an Automotive Degreaser before refitting roof trim.

To conceal exposed roof channel at front of Tracks, cut to length the original roof trim removed in Step 1. Measure out the required length by positioning the trim along roof channel. The front needs to be measured so the end of trim sits under windscreen rubber. Use a pencil to mark reference line. Remove trim from vehicle and cut to length using a Fine Tooth Hacksaw. Liberally apply an Automotive Adhesive to roof channel then refit trim piece. The trim must butt up against the Track End Cap. Wipe off any excess adhesive with a damp cloth and allow to dry.



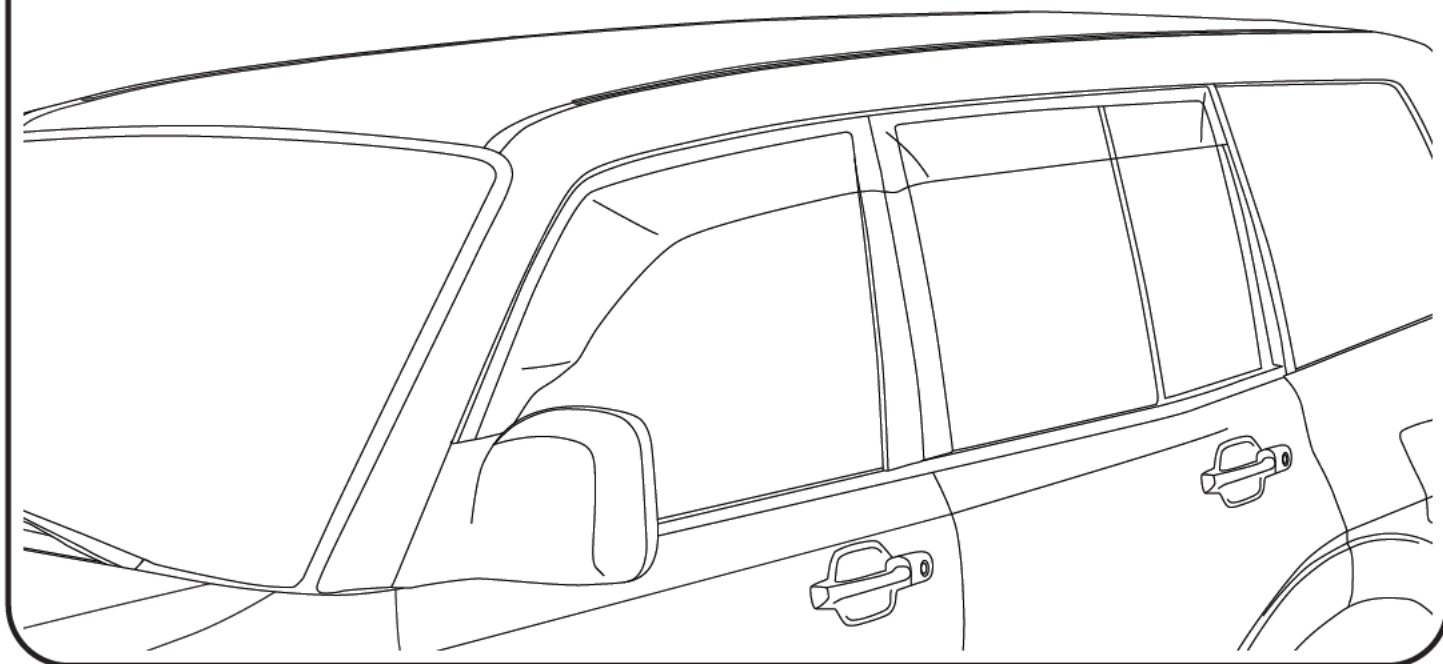
Use a fine tooth Hacksaw to cut Trim. Alternatively tin snips can be used.

Liberally apply an Automotive Adhesive such as Sikaflex



14**TRACK INSTALLATION COMPLETE**

Check both Tracks are secured to the vehicle as per these installation instructions. For assistance contact your local Yakima dealer.



IF INSTALLING LockNLoad ROOF RACKS, CONTINUE ON STEP 15

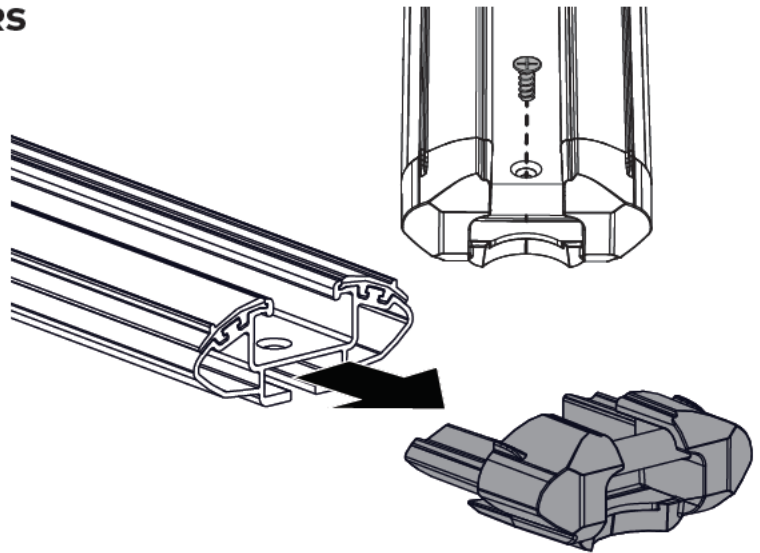
IF INSTALLING LockNLoad PLATFORM, NOW SWITCH TO YOUR PLATFORM INSTRUCTIONS

BAR INSTALLATION

15 REMOVE END CAPS FROM BARS

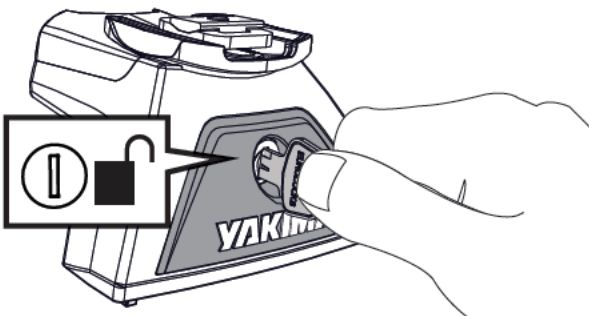
From the LockNLoad Bar Kit (sold separately), remove Plastite Screw from each Bar end using a #2 Phillips Head Screwdriver and pull out End Caps from Bars.

Keep all parts aside for later installation.



16 REMOVE LEG COVERS

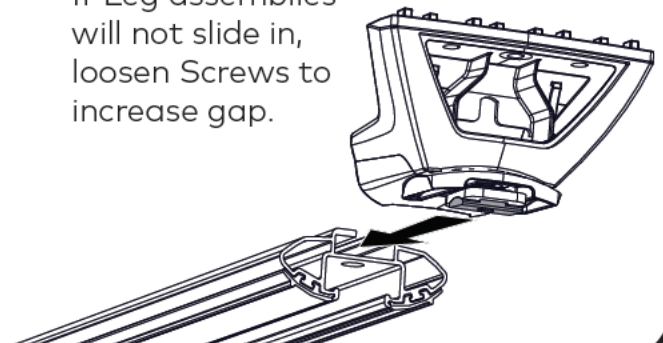
Using the keys supplied in the LockNLoad Leg Kit (sold separately), remove all Leg Covers.



17 INSERT LEGS

Slide the pre-assembled Leg assemblies into the underside channel of LockNLoad Bars.

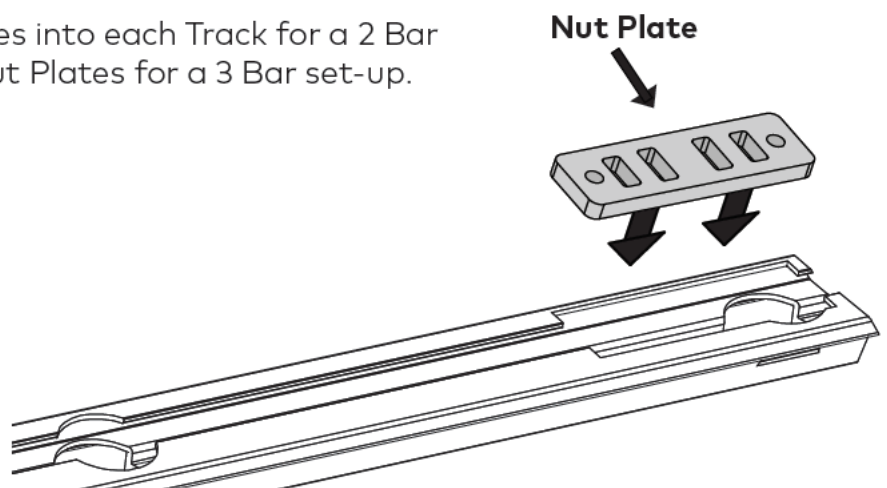
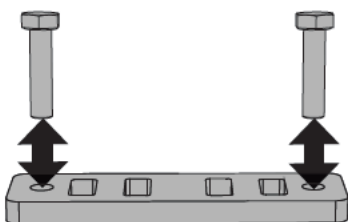
If Leg assemblies will not slide in, loosen Screws to increase gap.



18 INSERT NUT PLATES

Run all M6 Hex Screws through Nut Plates to remove burrs.

Insert two (2) Nut Plates into each Track for a 2 Bar set-up and three (3) Nut Plates for a 3 Bar set-up.



19

THIRD CROSSBAR HEIGHT PACKERS

When installing a third bar, the following LockNLoad Height Packer Kits (sold separately) must be used to ensure all three Bars are level:

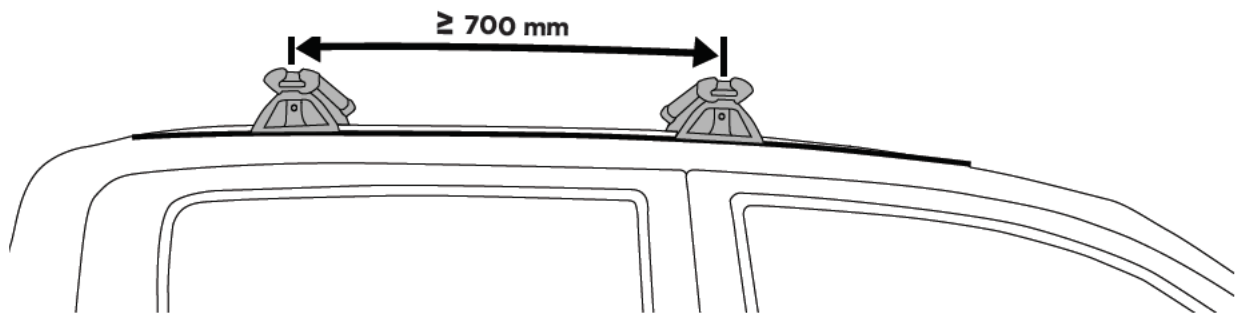
HEIGHT PACKER REQUIREMENTS FOR THIRD BAR	
Front Bar	1 x LockNLoad Height Packer 4 pack
Rear Bar	1 x LockNLoad Height Packer 4 pack

NOTE - Only the 4 pack Height Packer Kits can be used as they contain the correct Screws

20

BAR LOCATION

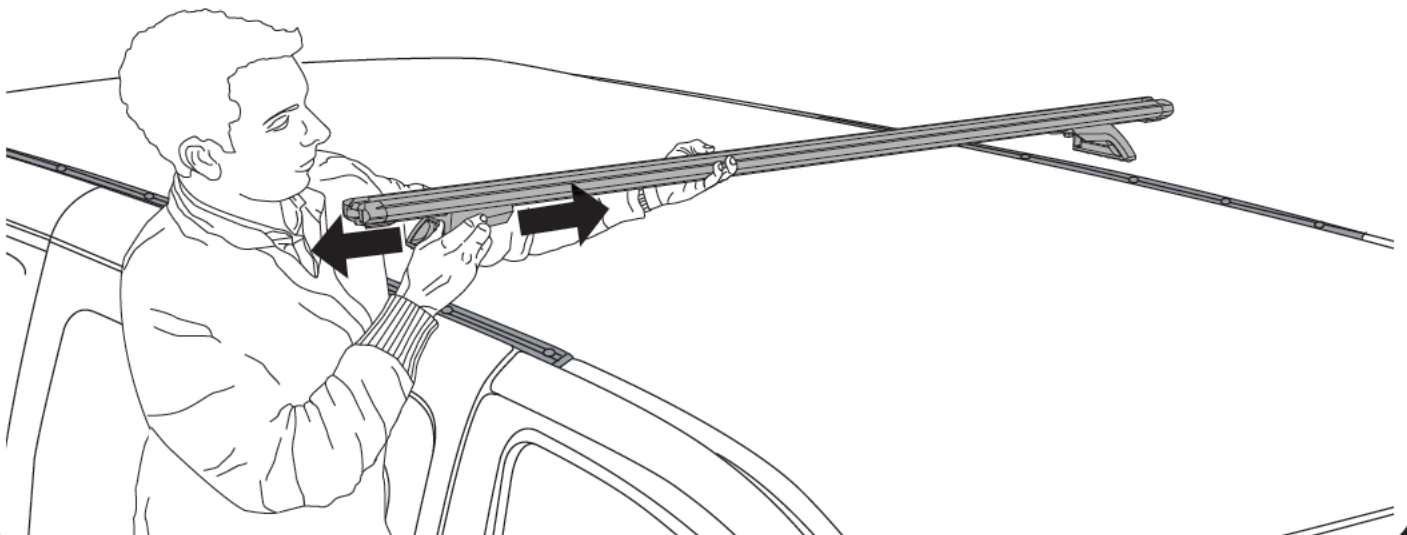
IMPORTANT: Before beginning Bar installation, identify where along the Track you want the Front and Rear Bars fitted. We recommend a minimum of 700 mm between Bars.



21

BAR PLACEMENT

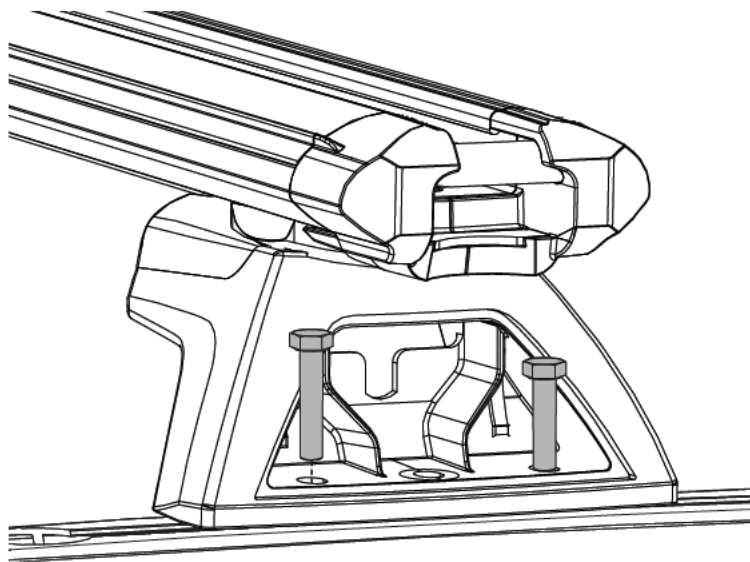
Carefully place a Bar assembly over Nut Plates, ensuring spacing is correct as shown in the previous Step. **Take care not to damage vehicle.** Position Legs along Bar until both legs are securely positioned on Nut Plates within Track.



22**SECURE BAR ASSEMBLY TO TRACKS**

From the LockNLoad Track Kit, insert 1 x M6 Hex Screw through the two outer holes on Legs into Nut Plate as shown.

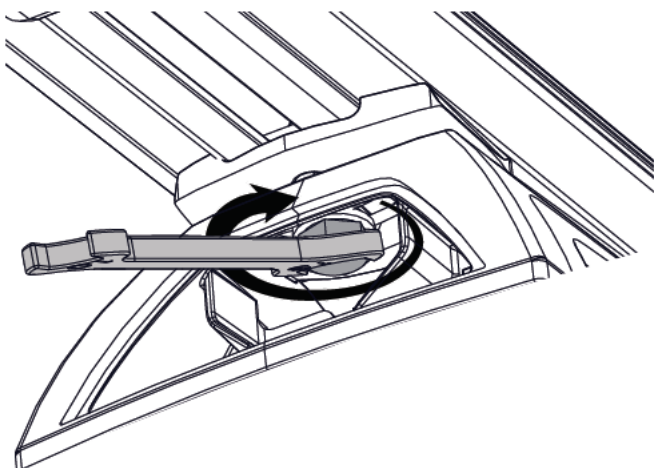
Loosely secure Screws using a 5 mm ball end Allen Key.

**23****ADJUST BAR OVER HANG**

Use a Tape Measure to ensure even Bar overhang on each side, re-adjust if required by sliding bar along tracks.

**24****SECURE LEGS TO BARS**

Tighten all M8 Set Screws to 9 Nm using a 13 mm Spanner.

**25****REPEAT AND REMOVE**

Repeat Steps 21 - 24 for remaining bar assemblies.

Carefully remove all Bar and Leg assemblies from vehicle.



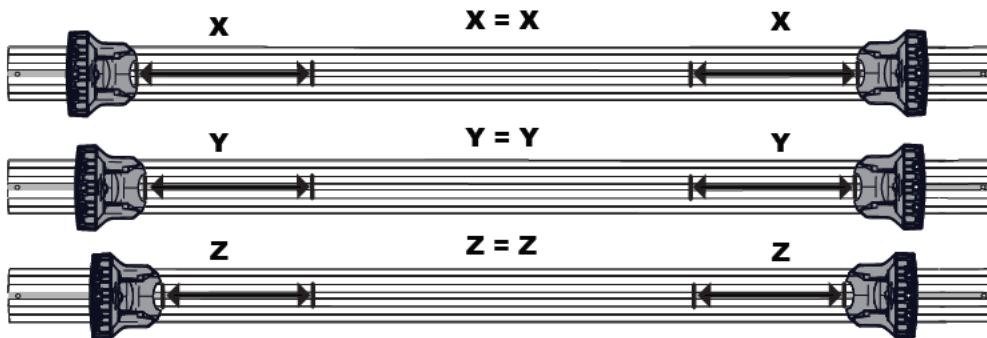
26

CHECK BAR SLOT MEASUREMENTS

Place Bars on flat surface with legs facing upwards, as shown. Take appropriate measures to avoid scratching the product and surface.

Identify slot on each Bar end. Using a Tape Measure, record Leg to underside slot distance of each bar in the table (right). Ensure measurement is taken from the centre of the Legs as shown.

BAR SLOT MEASUREMENTS	
Bar 1 (X)	_____ mm x2
Bar 2 (Y)	_____ mm x2
Bar 3 (Z)	_____ mm x2

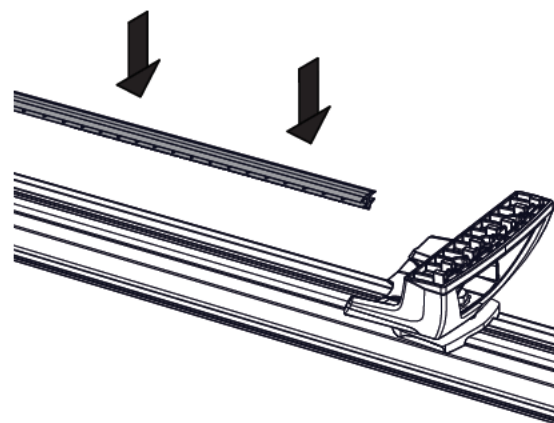
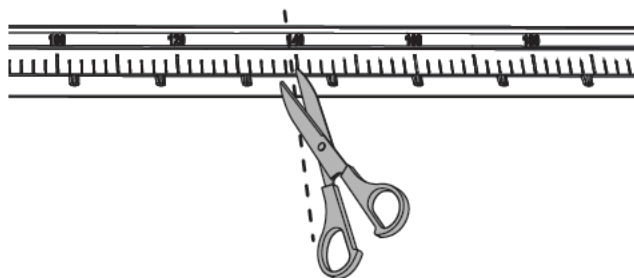


The ends of each bar should be the same measurement respectively, if not, loosen M8 Set Screws and repeat Steps 21-26.

27

BAR SLOT COVERS (INSIDE LEG)

From the LockNLoad Bar Kit, cut Bar Slot Covers as per measurements recorded in the previous Step and press into the underside channel of Bar ends as shown.



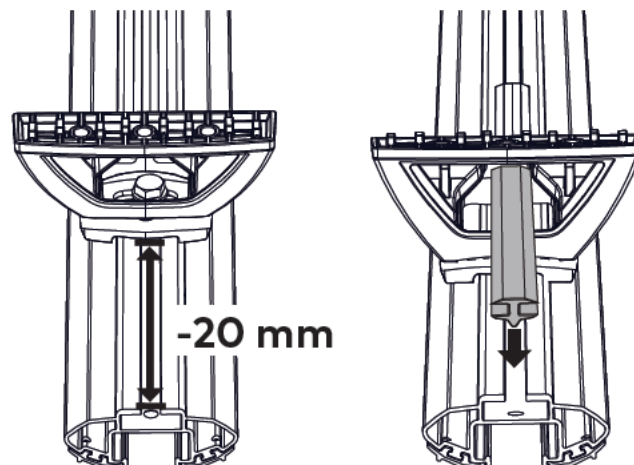
NOTE - Bar Slot Covers to be inserted with flat side visible

28

BAR SLOT COVERS (OUTSIDE LEG)

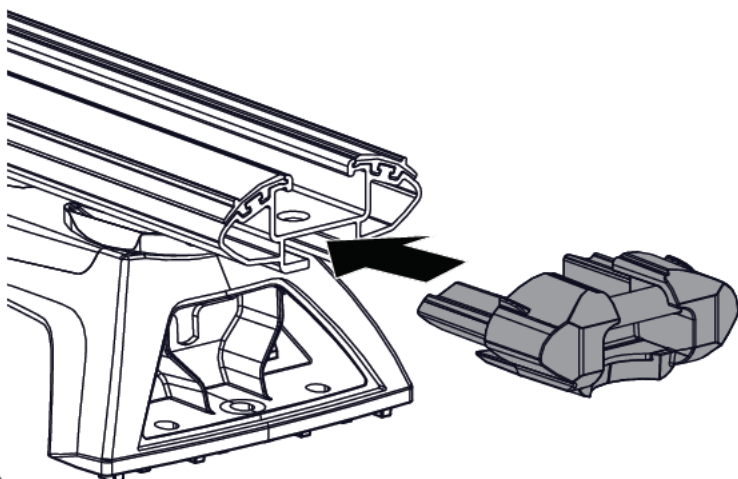
Measure the Bar channel outside of the Legs and subtract 20 mm from this measurement.

Using the remaining pieces of Slot Cover from the previous Step, cut to this length and press into the underside channel of each Bar end as shown.

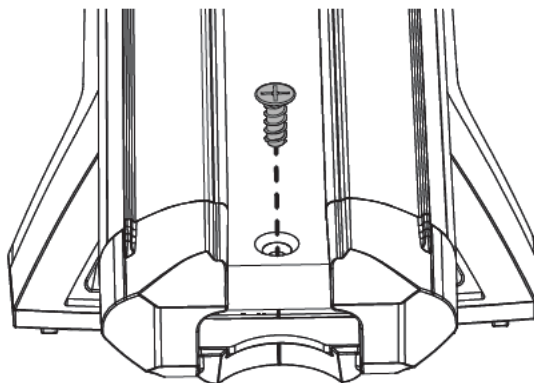


29**SECURE END CAPS TO BARS**

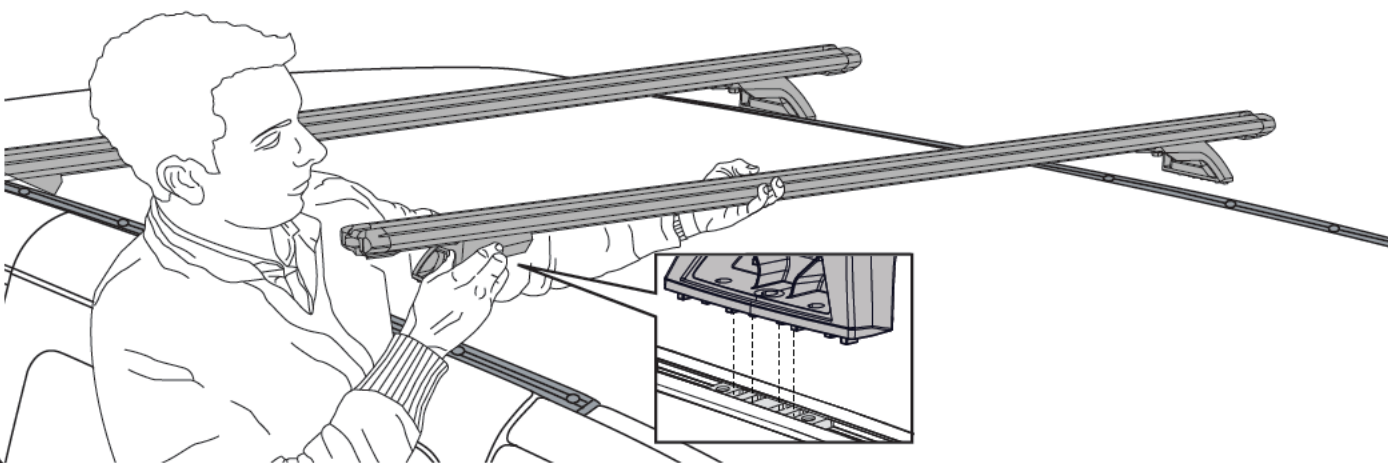
Insert the End Caps as shown. A Rubber Mallet can be used to assist installation.

**30**

Secure using Plastite Screw (from LockNLoad Bar Kit). Tighten using a #2 Phillips Head Screwdriver.

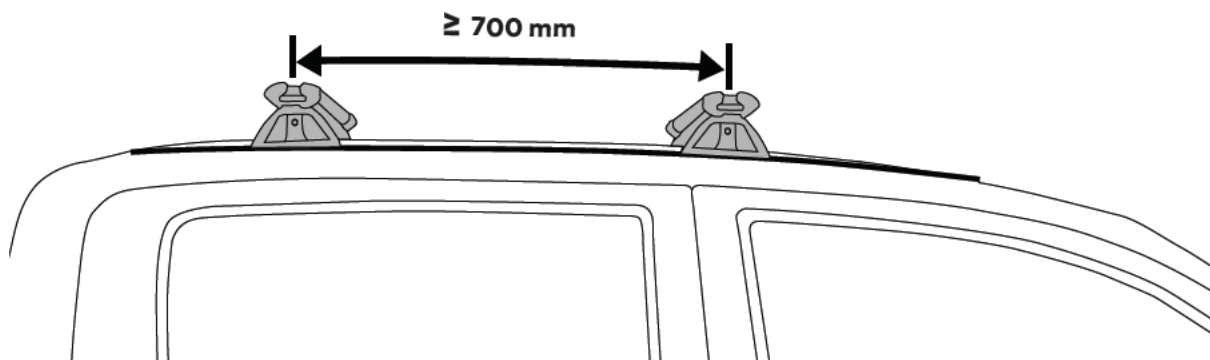
**31****BAR FITMENT**

Slide Nut Plates in Track into position for Bar placement (it doesn't have to be exact). Place Bar assembly onto Tracks, carefully locating the four central raised notches on base of Legs into the cut outs on Nut Plates as shown. **Take care not to damage vehicle.** Repeat for remaining Bar.

**32**

Position front and rear Bars along Tracks as required, ensuring there is a minimum distance of 700 mm between each Bar.

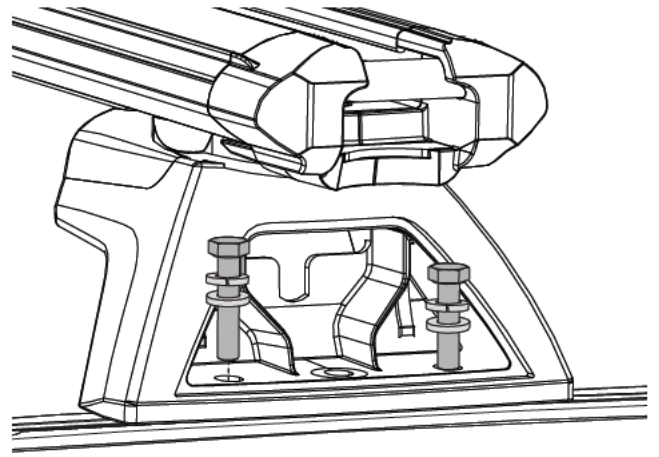
Measure from the centre of each Leg as shown.



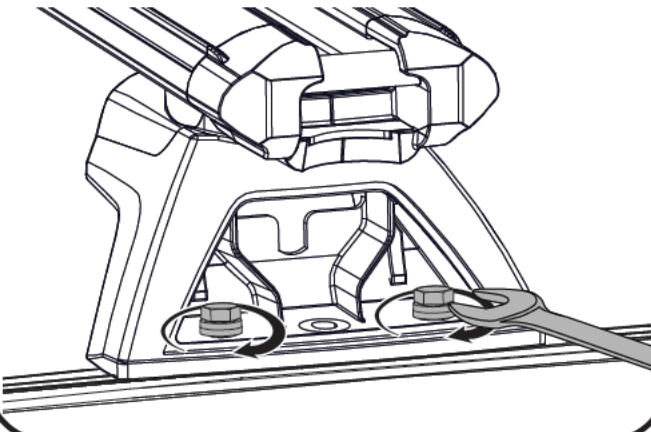
33**M6 HEX SCREW ASSEMBLY**

From the LockNLoad Track Kit, assemble 1 x M6 Spring Washer and 1 x M6 Washer onto each M6 Hex Screw.

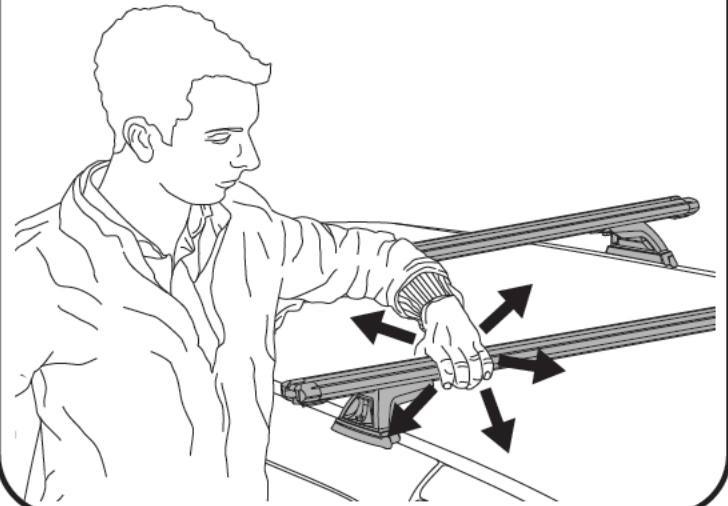
Insert through the outer holes on Legs into Nut Plates as shown.

**34****SECURE BARS TO TRACKS**

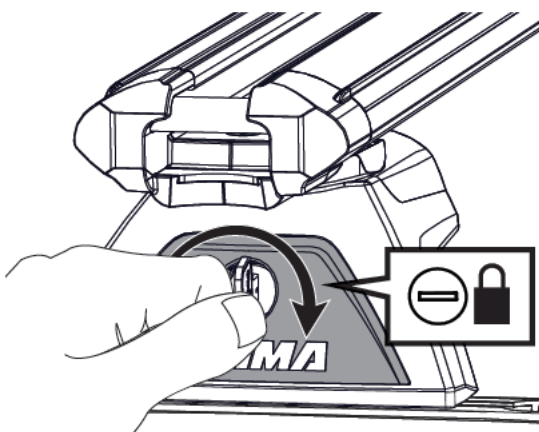
Tighten all M6 Hex Screws to 5 Nm using a 10 mm Open Ended Spanner. **Do not over tighten.**

**35****CHECK BAR LEGS ARE SECURE**

Check all Bar Legs are secure.

**36****FIT LEG COVERS**

Using the keys and Covers supplied in the LockNLoad Leg Kit, fit and lock all Leg Covers.

**37****BAR KEYS**

Place one key on the vehicle key ring and put the other away safely, or store with the spare vehicle key.

Write the key number (which is stamped on the key) in the box provided. Replacement keys are available from Yakima stockists, visit www.yakima.com.au or www.yakima.co.nz to find your nearest store or contact us directly on 1800 143 548 (AU) or 0800 4776 722 (NZ).

NOTE - Left over components are for the installation of a third optional Bar

Key Number:



www.yakima.com.au
www.yakima.com

YAKIMA AUSTRALIA PTY. LTD

17 Hinkler Court
Brendale, QLD 4500
Australia
1800 143 548

YAKIMA PRODUCTS, INC.

4101 Kruse Way
Lake Oswego, OR
97035-2541
USA
888 925 4621