

**MAXIMUM PRODUCT LOAD RATING: 100 kg** 

**IMPORTANT:**

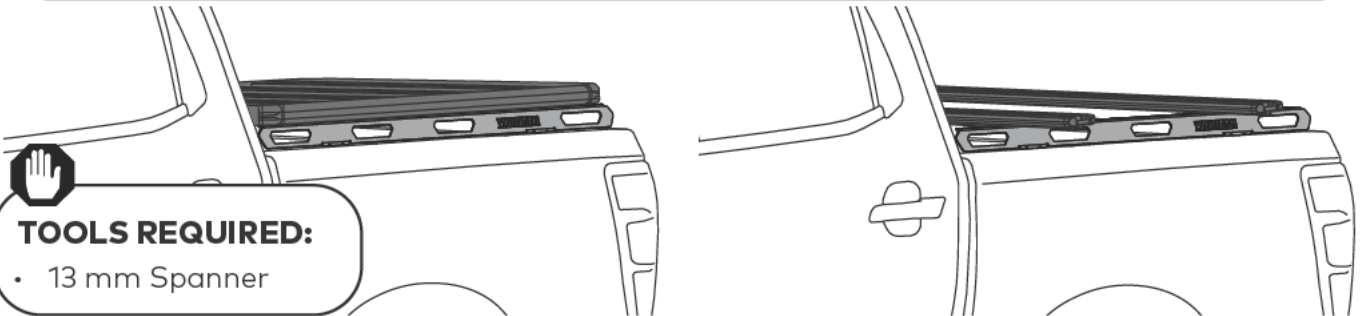
- **LOAD = WEIGHT OF PLATFORM or BARS + MOUNTING SYSTEM + ACCESSORIES + CARGO**
- **PLEASE REFER TO VEHICLE MANUFACTURER SPECIFICATIONS FOR MAX ROOF LOAD CAPACITY OF VEHICLE. THE LOWEST LOAD RATING APPLIES.**
- **OFFROAD RATING: SCAN QR CODE FOR LOCKNLOAD LOAD RATING GUIDE. REDUCTIONS MAY APPLY.**



THIS MOUNTING KIT REQUIRES AN 800 MM OR 1000 MM LONG UNIVERSAL TRACK TO BE INSTALLED FIRST.  
NOTE: THE UPPER SURFACE OF THE TRACK NEEDS TO BE WITHIN +/- 2 DEGREES OF FLAT, LEFT TO RIGHT.

### FIRST TIME INSTALLATION

- Please read instructions carefully before installation.
- Check the contents of kit. Each LockNLoad RuggedLine has the last four digits of the kit's part number lasered in. Contact your YAKIMA dealer if any parts appear missing, incorrect or damaged.
- Clean your roof thoroughly prior to fitting the LockNLoad RuggedLine.
- Place these instructions in the vehicle's glove box after installation is complete.

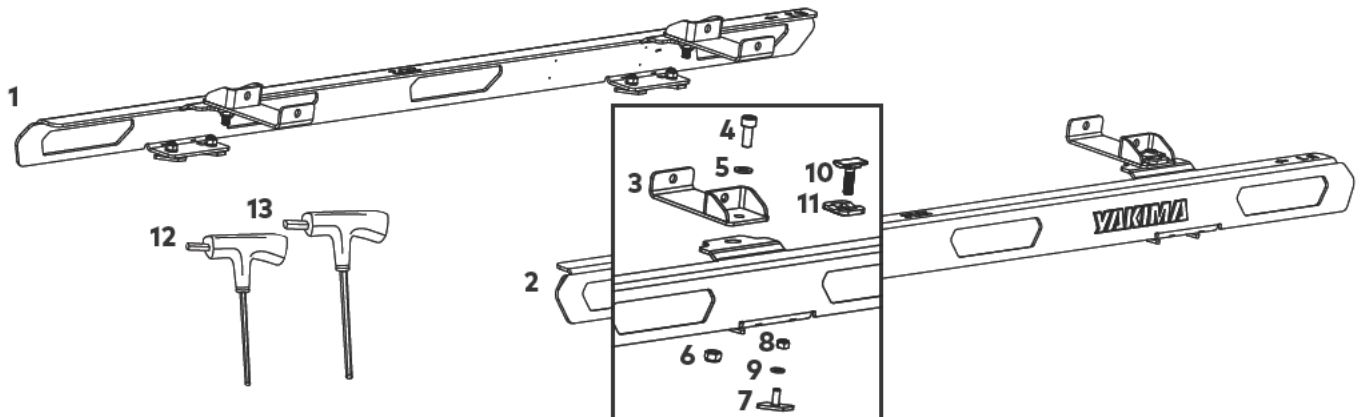


**TOOLS REQUIRED:**

- 13 mm Spanner

### KIT CONTENTS

ITEM	COMPONENT	QTY	ITEM	COMPONENT	QTY
1.	RuggedLine Flat 1200 mm RH 2172	x1	8.	M6 Nyloc Nut	x8
2.	RuggedLine Flat 1200 mm LH 2172	x1	9.	M6 Flat Washer	x8
3.	Pivot Bracket	x4	10.	Slot Bolt	x4
4.	M8 x 20 mm Socket Head Cap Screw	x4	11.	Slot Plate	x4
5.	M8 Washer	x8	12.	4 mm T-Handle Ball End Allen Key	x1
6.	M8 Nyloc Nut	x4	13.	6 mm T-Handle Ball End Allen Key	x1
7.	M6 Self Aligning T-Bolt	x8			



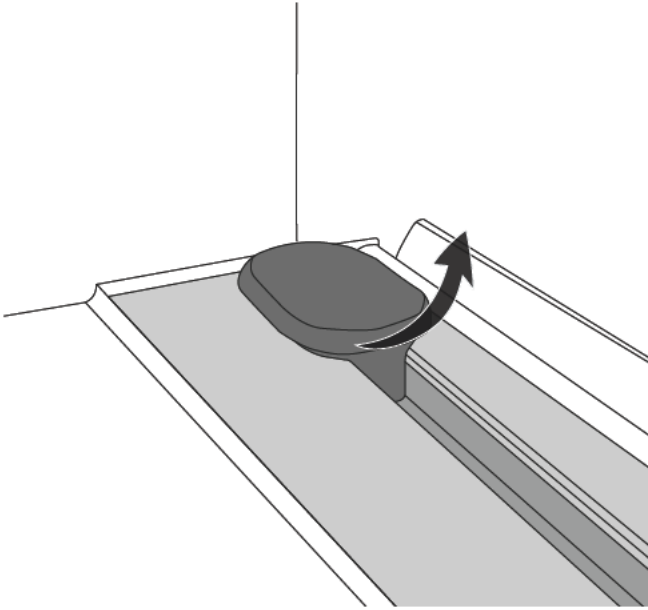
NOTE: ITEMS 3, 4, 5 & 6 ARE FOR USE ON A PLATFORM INSTALLATION.  
ITEMS 6, 10 & 11 ARE FOR TRIMHD BAR INSTALLATION.

## RUGGEDLINE INSTALLATION

**1**

### REMOVE STOPPER.

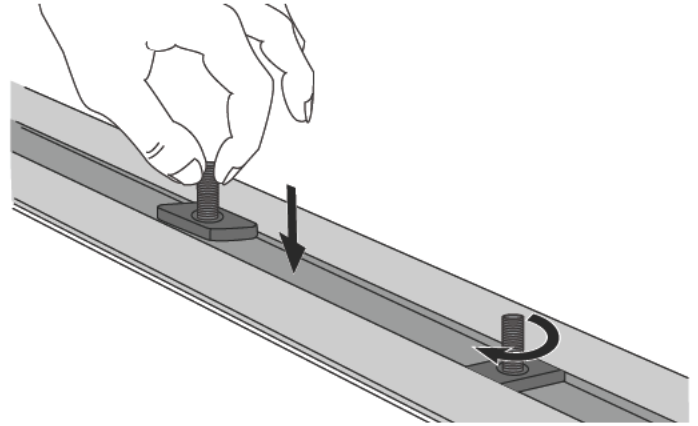
Remove track stopper if applicable.



**2**

### INSERT SELF ALIGNING T-BOLT.

Inset M6 self aligning T-bolt. Depending on track either insert and slide T-bolt through an access hole or if track allows drop and turn the T-bolt into the end of the track and slide into position along the track.

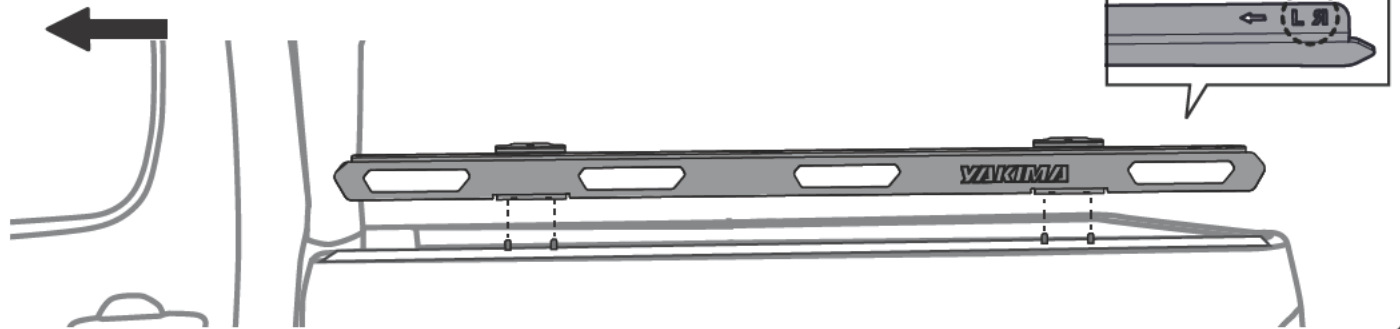


**3**

### POSITION RUGGEDLINE ON VEHICLE.

Referring to the left-right orientation on top of each RuggedLine, carefully place one side of RuggedLine onto vehicle tray sides (or canopy) as shown. Line up the T-bolts in the track to the mounting holes on the bottom tabs of the RuggedLine. The tabs are to face inward toward the vehicle.

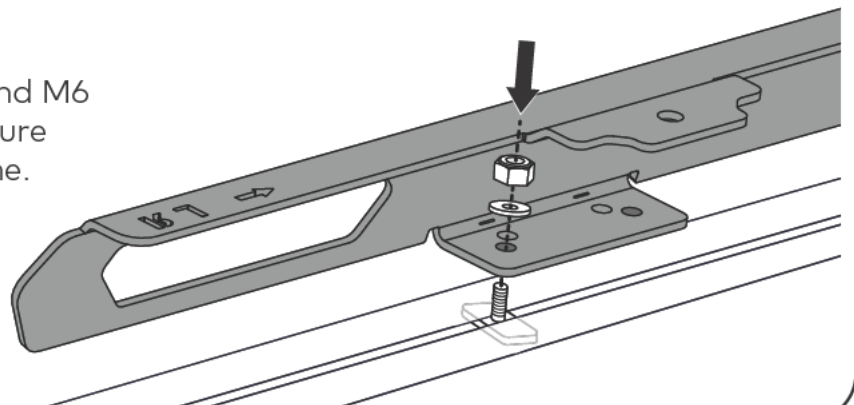
Front of vehicle



**4**

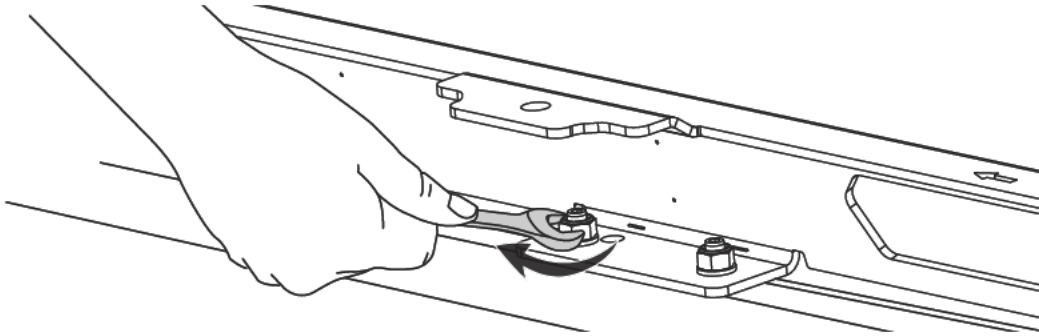
### ASSEMBLE RUGGEDLINE HARDWARE.

Assemble the M6 washer and M6 nyloc nut as shown and secure the T-bolt to the RuggedLine.



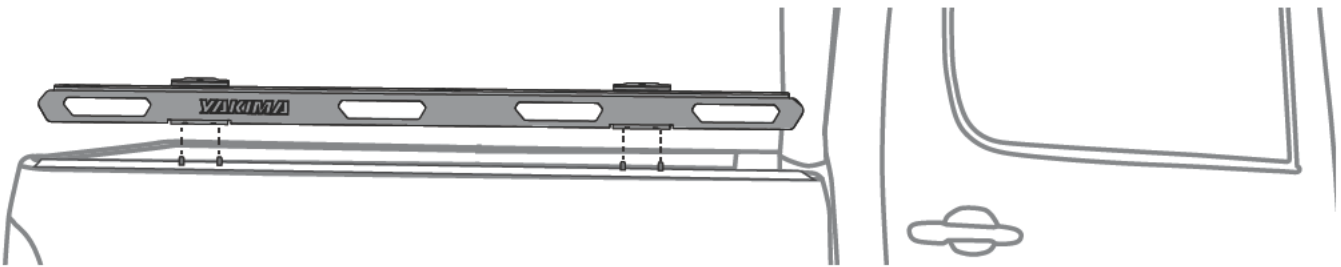
**5****TIGHTEN RUGGEDLINE HARDWARE.**

Using the 10 mm spanner, and avoiding damage to the powder coat, start to carefully secure the RuggedLine by tightening the M6 nyloc nut to 7 Nm into the mounting holes. Ensure the T-bolt remains rotated clockwise within the track.

**6****REPEAT STEPS TO OPPOSITE SIDE.**

Repeat steps 1-5 for securing opposite side of RuggedLine.

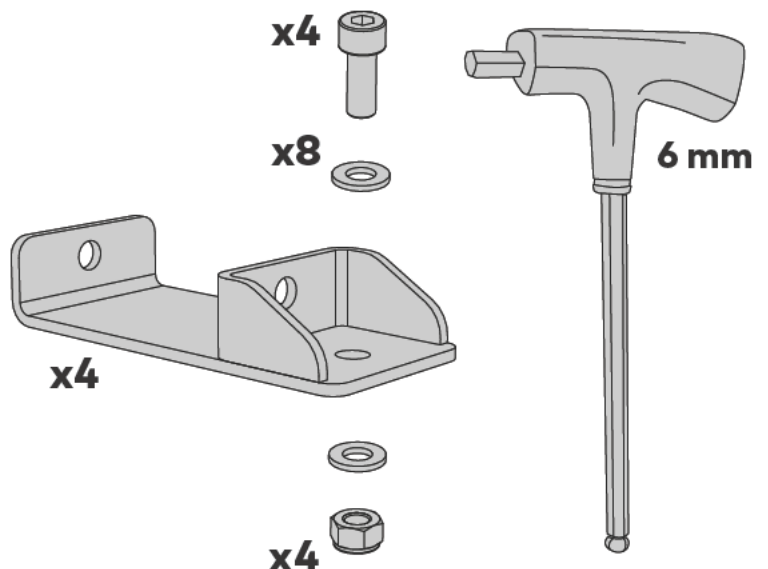
Ensure both RuggedLine are securely positioned on vehicle tray. Check each screw is secure before proceeding to install LockNLoad platform or TrimHD bars.

**7****PIVOT BRACKET ASSEMBLIES.**

Retain the 6 mm T-handle ball end allen key and not yet installed pivot brackets, M8 x 20 mm socket head cap screws, M8 nyloc nuts and M8 washers.



These components will be required for mounting the LockNLoad platform to your newly installed RuggedLine.



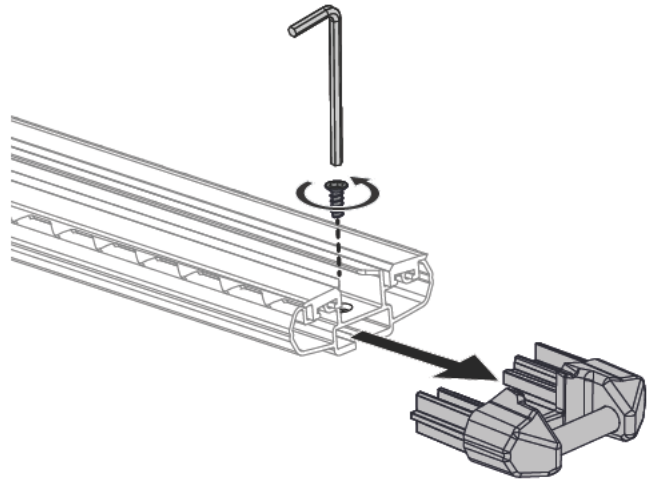
**FOR LOCKNLOAD PLATFORM INSTALLATION, REFER TO LOCKNLOAD PLATFORM INSTRUCTIONS**  
**FOR LOCKNLOAD BAR INSTALLATION, CONTINUE TO PAGE 4**

## TRIMHD BAR INSTALLATION

1

### REMOVE END CAPS FROM BARS.

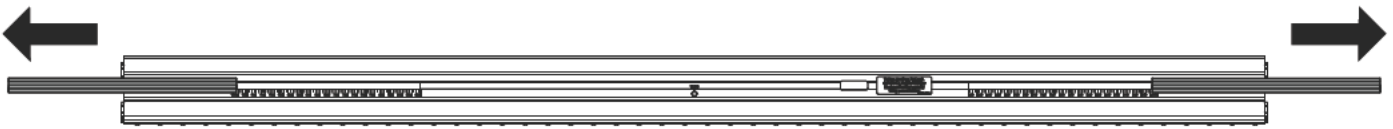
From the TrimHD kit (sold separately), remove plastite screw from each bar end using a by using a 4 mm allen key and pull out end caps from bars. Keep all parts aside for later installation.



2

### REMOVE INFILL.

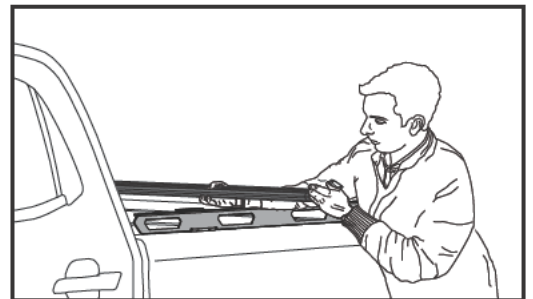
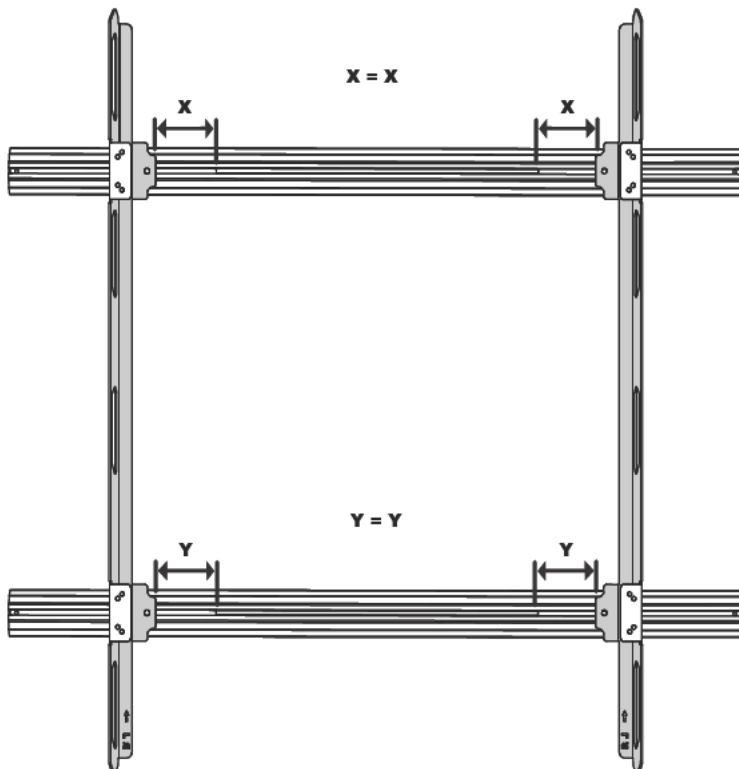
Remove the infill from underside of the TrimHD bar.



3

### BAR FITMENT.

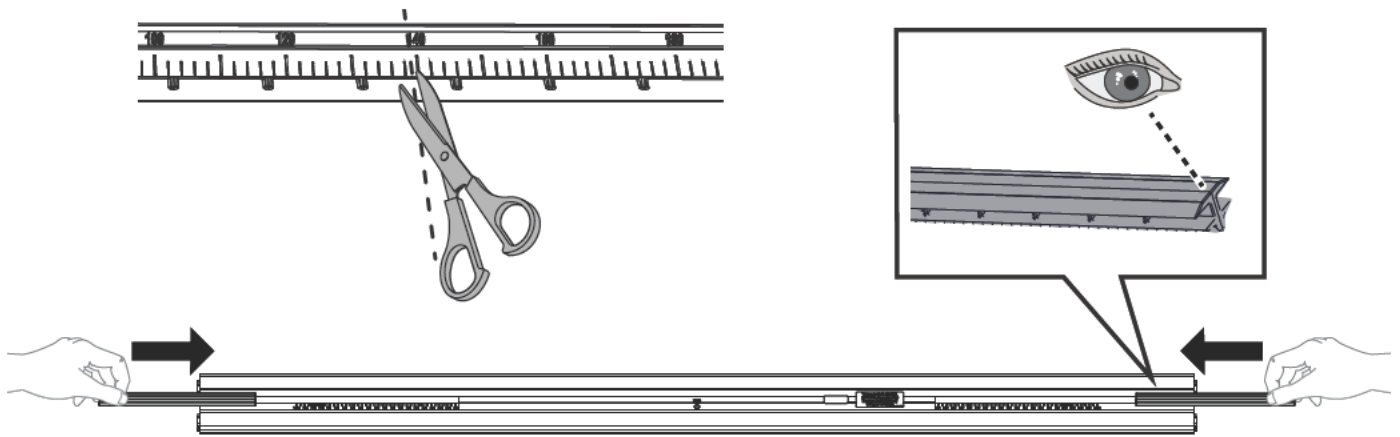
Carefully place bar assembly over RuggedLine. **Take care not to damage vehicle.** Once positioned correctly using the measurements engraved on the underside of bar, measure the underside infill channel inside edge distance to the RuggedLine.



**NOTE** - TrimHD Bars and RuggedLine shown upside down.

**4****INSERT INNER POSITION INFILL.**

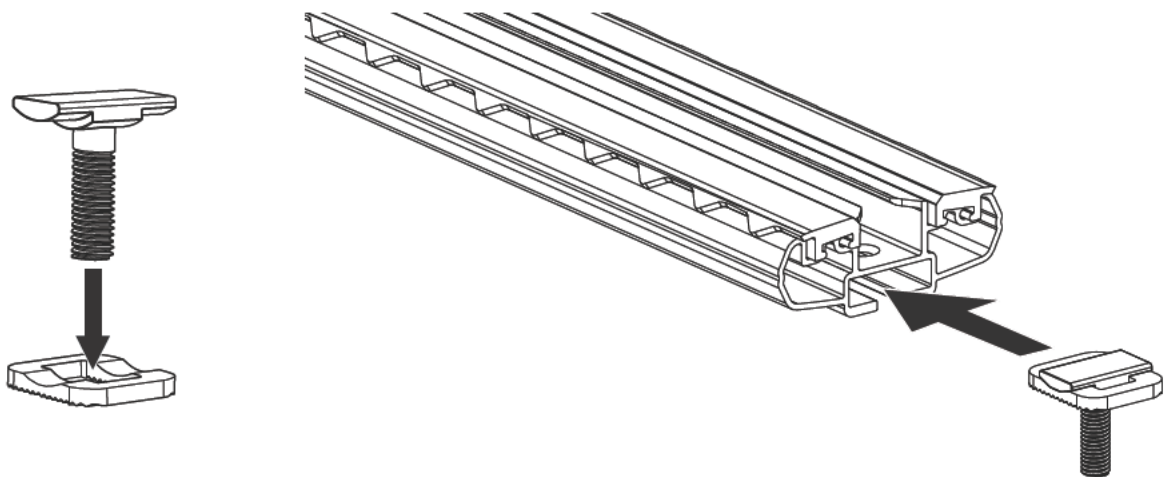
Cut infill according to the measurement taken in step 3. Insert the 2 inner pieces of the cut infill into the underside channel of the front and rear bar ends as shown. Retain the 2 outer pieces of the cut infill for use in step 6.



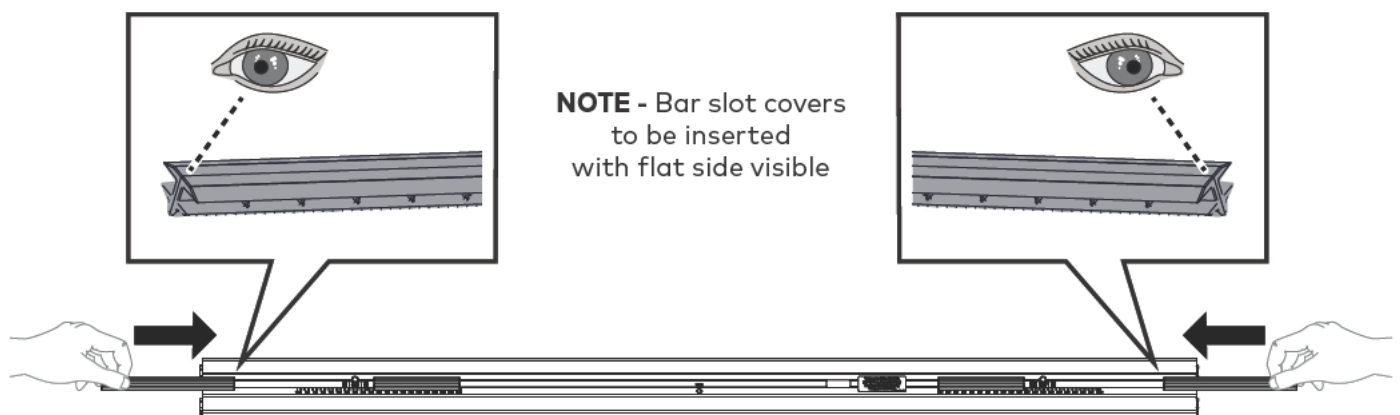
**NOTE** - Bar slot covers to be inserted with flat side visible

**5****INSERT SLOT BOLT AND SLOT PLATE.**

Insert the slot bolt and the slot plate into the underside bar channel.

**6****INSERT OUTER POSITION INFILL.**

Insert the 2 outer pieces of the cut infill into the underside channel of the front and rear bar ends as shown.

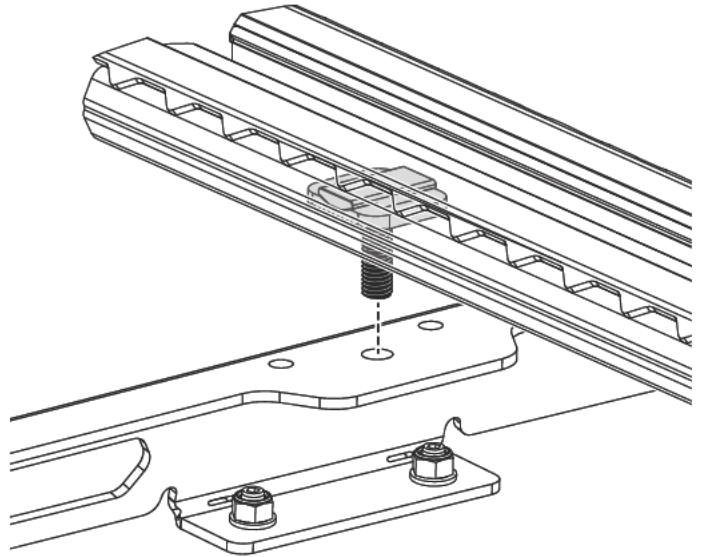


**NOTE** - Bar slot covers to be inserted with flat side visible

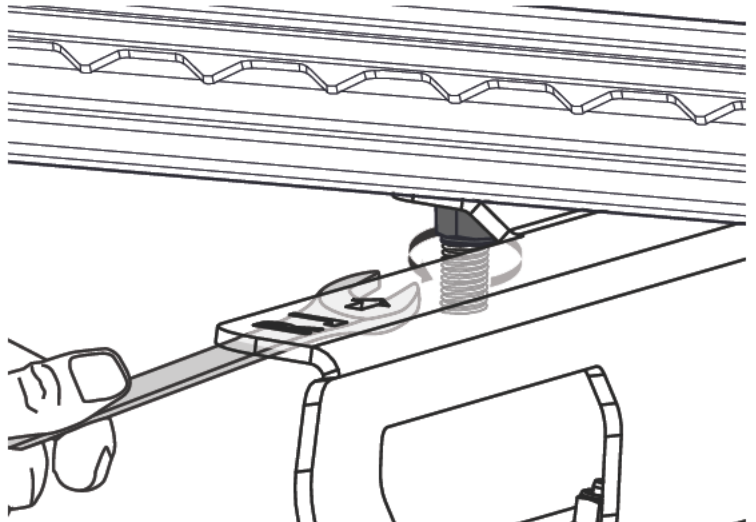
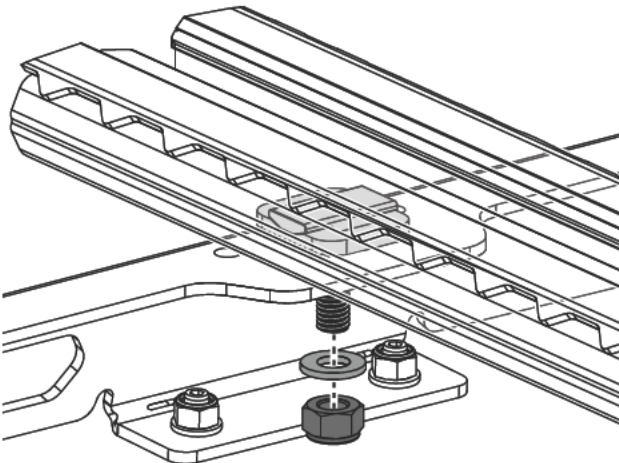


**7****POSITION BARS.**

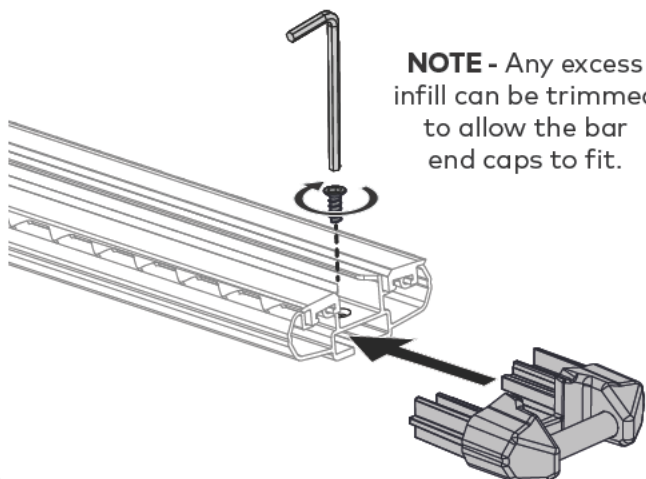
Insert the slot bolt assembly into the RuggedLine.

**8****SECURE SLOT BOLT ASSEMBLY.**

Using the 13 mm spanner for the M8 nyloc nut, secure the slot bolt assembly to the RuggedLine. Tighten to 7 Nm.

**9****REINSTALL END CAPS TO BARS.**

Insert the end caps into bar ends. Install and tighten the plastite screws using a 4 mm allen key.

**10****CHECK BARS ARE SECURE.**

Check all bars are secure.



This page intentionally left blank



[www.yakima.com.au](http://www.yakima.com.au)  
[www.yakima.co.nz](http://www.yakima.co.nz)  
[www.yakima.com](http://www.yakima.com)  
[www.yakima.eu](http://www.yakima.eu)

**YAKIMA AUSTRALIA PTY LTD**

17 Hinkler Court  
Brendale, QLD 4500  
Australia  
1800 143 548

**YAKIMA PRODUCTS, INC.**

4101 Kruse Way  
Lake Oswego, OR  
97035-2541  
USA  
888 925 4621  
[yakima.com/support](http://yakima.com/support)

ALL CONTENT SUBJECT TO YAKIMA AUSTRALIA PTY LTD COPYRIGHT © 2024